



MONTHLY MEMBERSHIP PROGRESS REPORT

District 21 B

Results as of: 06/30/2018

GMT: WILLIAM PHILLIPI

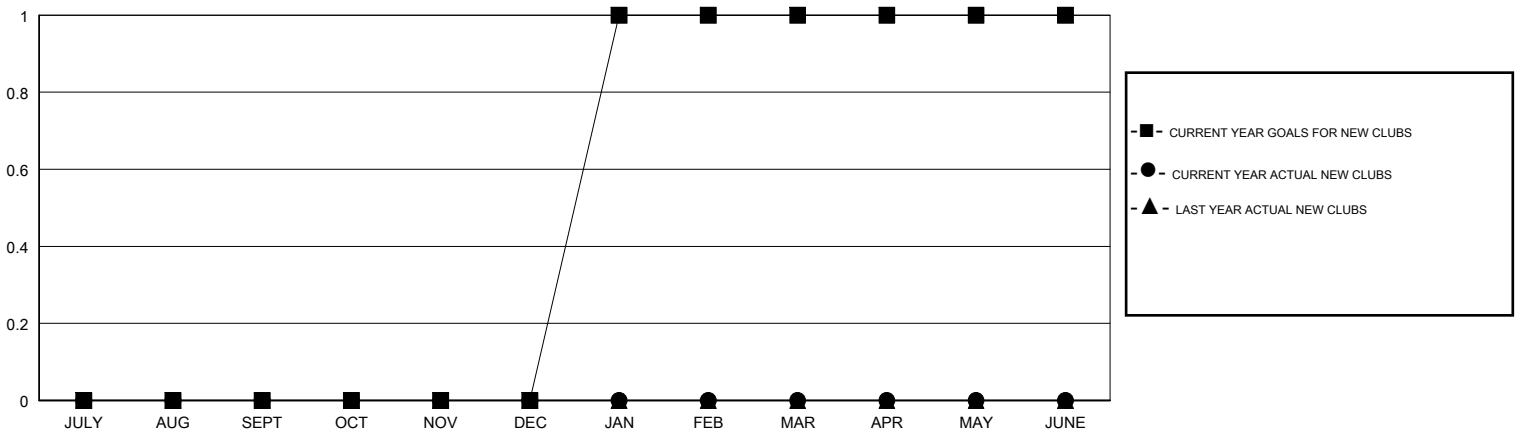
LOCATION ARIZONA

GMT CA

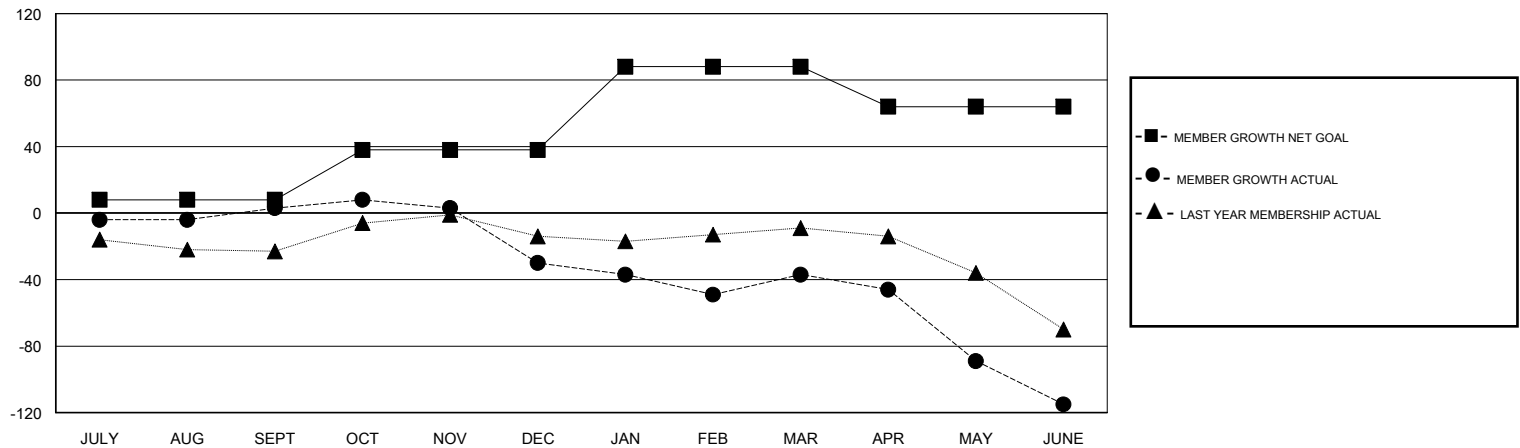
Clubs			
RESULTS FOR 2017-2018			
QUARTER	NEW CLUB GOAL	NEW CLUBS	DROPPED CLUBS
JULY/AUG/SEPT	0	0	0
OCT/NOV/DEC	0	0	1
JAN/FEB/MAR	1	0	0
APR/MAY/JUNE	0	0	1

Members			
RESULTS FOR 2017-2018			
QUARTER	MEMBER GROWTH NET GOAL	MEMBER GROWTH ACTUAL	DROPPED MEMBERS ACTUAL (including transfers)
JULY/AUG/SEPT	8	49	37
OCT/NOV/DEC	30	49	75
JAN/FEB/MAR	50	41	37
APR/MAY/JUNE	-24	82	132

GOALS AND ACTUAL NEW CLUBS CUMULATIVE



GOALS AND ACTUAL MEMBERS CUMULATIVE



DROPPED CLUBS: 2	34 CLUBS OF 43 ADDED 1 OR MORE NEW MEMBERS	<u>GENDER DISTRIBUTION</u> MALE 656 (55.78%) FEMALE 520 (44.22%) Women Percentage Fiscal Year Goal: 44%
<u>DROPPED MEMBERS</u> DECEASED 25 CLUB CANCELLED 13 OTHER 243 TOTAL 281	CLICK HERE FOR CUMULATIVE MEMBERSHIP DATA	TOTAL FAMILY UNIT MEMBERS 0 FAMILY MEMBERS PAYING HALF DUES 0